

The logo for Rockett Inc is centered at the top. It consists of the word "ROCKETT" in a large, bold, white, italicized sans-serif font with a red outline, set against a blue oval background. Below "ROCKETT" is the word "INC" in a smaller, white, italicized sans-serif font. The background of the entire advertisement is a close-up, slightly blurred view of numerous forged steel wheels, some of which are illuminated with a red light, creating a high-contrast, industrial aesthetic.

ROCKETT
INC

Over 100 Years of Manufacturing

Forged Steel Wheels & Standard Assemblies

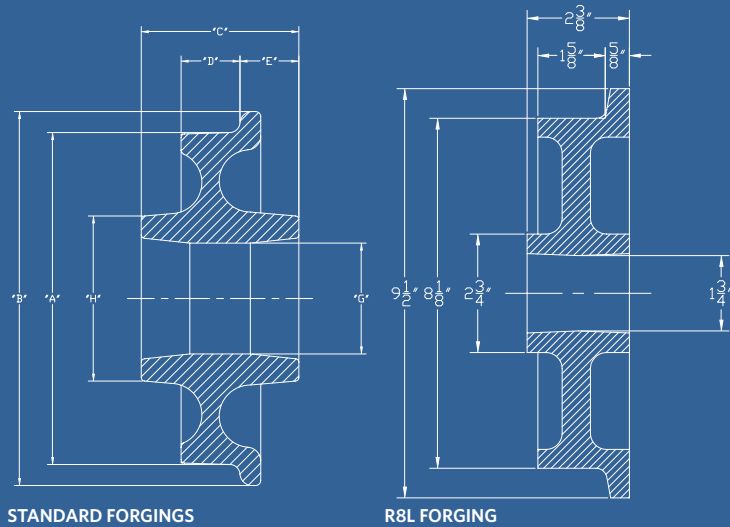
www.rockettinc.com

Request a quote at: sales@rockettinc.com

ROCKETT RAW FORGINGS

ROCKETT forged steel wheels are stocked in 8", 10", 12", and 350mm diameters. Dimensions are as shown below. Tread and flange of our 12" and 350mm forgings are induction hardened to a minimum of 425 Brinell for increased wear resistance under the heaviest of loads. Flame hardening available for 8" and 10" diameters upon request.

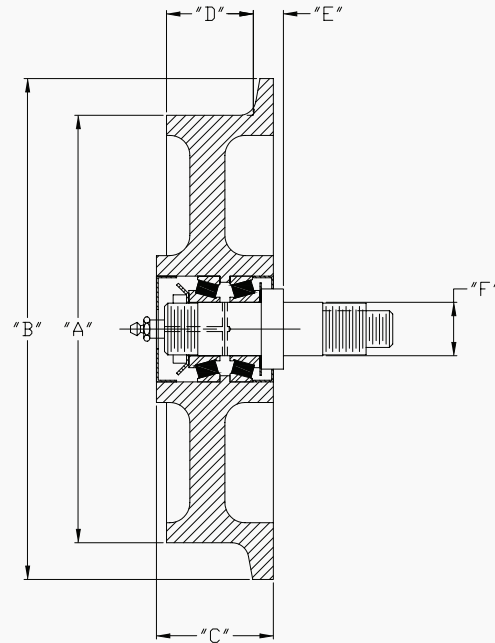
STANDARD FORGINGS							
PART #	A	B	C	D	E	G	H
R8S	8"	9-1/4"	4-11/16"	1-3/4"	1-5/8"	2-1/2"	4-3/8"
R10R	10"	11-1/2"	5-11/16"	2"	2"	1-7/8"	5-3/8"
R10S	10"	11-1/2"	5-11/16"	2"	2"	3-5/8"	5-3/8"
R12C	12"	13-1/2"	6-3/16"	2-1/8"	2-3/16"	4"	6-1/4"
R12D	12"	13-1/2"	5-3/4"	2-1/8"	2-3/16"	4"	5-15/16"
R12R	12"	13-1/2"	5-3/4"	2-1/8"	2-3/16"	1-7/8"	5-15/16"
R12DF	12"	13-1/8"	5-3/4"	*	N/A	4-5/16"	6"
R12FF	12"	12"	5-3/4"	*	N/A	4-5/16"	6"
R350A	350mm	390mm	6-3/16"	2-5/8"	2"	3-5/16"	6-3/4"



- ROCKETT forgings can be machined per customer specifications.
- Double-flanged and Flat-faced forgings are available in 12" diameter and can be machined for 30 or 40 lb. rail.
- In addition to forged steel, we offer machined wheels ranging in size from 5" to 18" diameter.
- Flame hardening available for all diameters upon request.



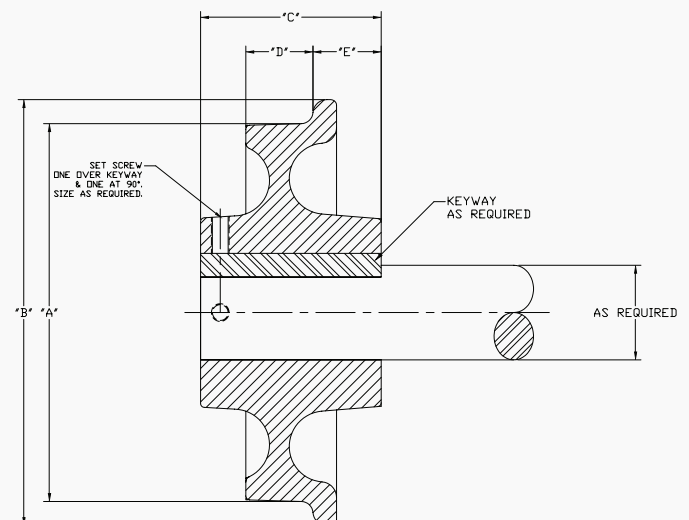
LIGHT DUTY WHEEL ASSEMBLY



PART #	A	B	C	D	E	F
R5-44643SSA	5"	6-3/8"	2-1/8"	1-5/16"	15/32"	7/8"
R6-44643SSA	6"	7-1/4"	2-3/16"	1-1/2"	11/16"	7/8"
R8L-44643SSA	8"	9-3/8"	2-3/16"	1-5/8"	9/16"	7/8"

*All assemblies shipped with mounting hardware.

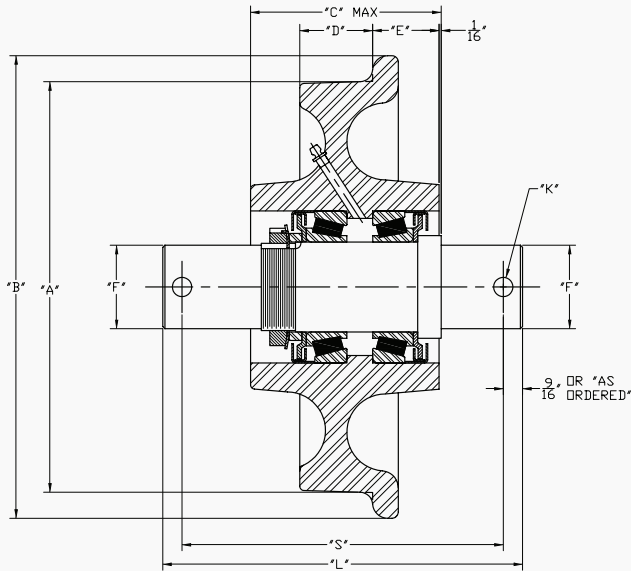
DRIVE WHEEL



Teaming our ROCKETT forgings with tapered roller bearings, we have developed a low cost durable wheel assembly ideal for heavy, medium, and light duty applications in both stub and thru axle designs.

In addition to the standard assemblies; we have extensive experience working with customers on special wheels and assemblies ranging from 5" up to 18" in diameter. Call or email today for more information.

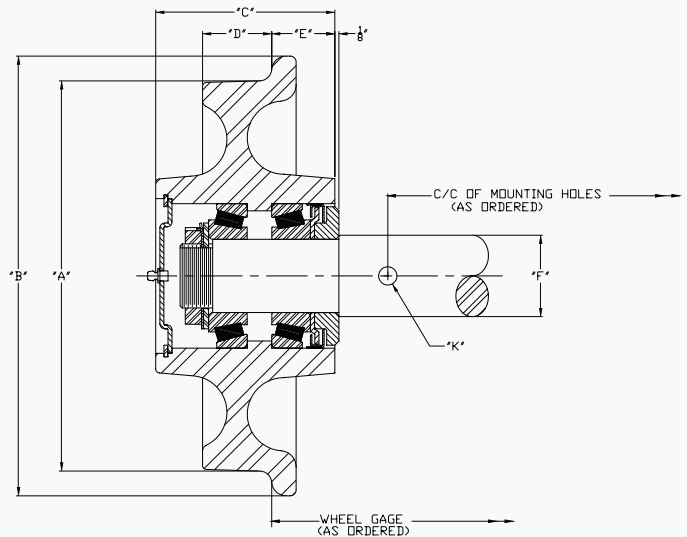
STUB AXLE ASSEMBLY



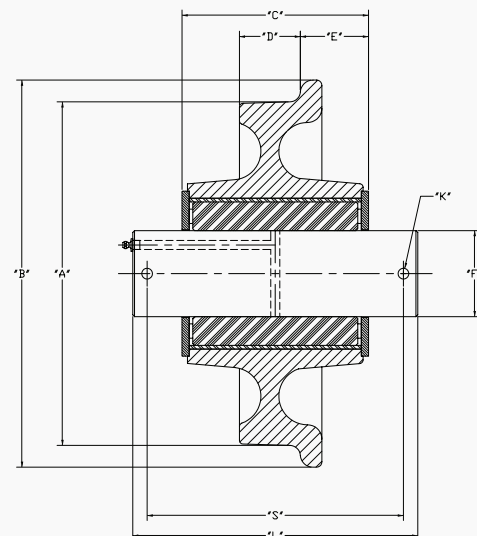
PART #	A	B	C	D	E	F	K
R8-2788SA	8"	9-1/4"	4-5/16"	1-3/4"	1-1/4"	1-1/4"	7/16"
R10-3979SA	10"	11-1/2"	5-1/2"	2"	1-15/16"	1-13/16"	9/16"
R10-3982SA	10"	11-1/2"	5-1/2"	2"	1-15/16"	2"	9/16"
R10-3984SA	10"	11-1/2"	5-1/2"	2"	1-15/16"	2-7/16"	9/16"
R10-33275SA	10"	11-1/2"	5-1/2"	2"	1-15/16"	2-7/16"	9/16"
R12-3979SA	12"	13-1/2"	5-1/2"	2-1/8"	1-15/16"	1-13/16"	9/16"
R12-3982SA	12"	13-1/2"	5-1/2"	2-1/8"	1-15/16"	2"	9/16"
R12-3984SA	12"	13-1/2"	5-1/2"	2-1/8"	1-15/16"	2-7/16"	9/16"
R12-33275SA	12"	13-1/2"	5-1/2"	2-1/8"	2"	2-7/16"	9/16"
R350-3984SA	350mm	390mm	5-1/2"	2-5/8"	1-15/16"	2-7/16"	9/16"
R350-575SA	350mm	390mm	5-1/2"	2-5/8"	1-15/16"	2-5/8"	9/16"

THRU AXLE ASSEMBLY

PART #	A	B	C	D	E	F	K
R8L-44643T	8"	9-3/8"	2-1/4"	1-9/16"	N/A	1-1/2"	5/16"
R8-2788TA	8"	9-1/4"	4-5/16"	1-3/4"	1-1/4"	2"	7/16"
R10-3979TA	10"	11-1/2"	5-9/16"	2"	1-15/16"	2-1/2"	9/16"
R10-3982TA	10"	11-1/2"	5-9/16"	2"	1-15/16"	2-3/4"	9/16"
R10-3984TA	10"	11-1/2"	5-9/16"	2"	1-15/16"	2-5/8"	9/16"
R12-3979TA	12"	13-1/2"	5-9/16"	2-1/8"	1-15/16"	2-1/2"	9/16"
R12-3982TA	12"	13-1/2"	5-9/16"	2-1/8"	1-15/16"	2-3/4"	9/16"
R12-3984TA	12"	13-1/2"	5-9/16"	2-1/8"	1-15/16"	2-5/8"	9/16"
R350-575TA	350mm	390mm	5-7/8"	2-5/8"	1-15/16"	3-1/2"	9/16"



CAGED ROLLER BEARING ASSEMBLY



PART #	A	B	C	D	E	F	K	L	S
R12-6.0SA	12"	13-1/2"	6-1/2"	2-1/8"	2-3/8"	3"	17/32"	AS ORDERED	AS ORDERED
R12-5.0SA	12"	13-1/2"	5-1/2"	2-1/8"	1-7/8"	3"	17/32"	AS ORDERED	AS ORDERED
R12-4.5SA	12"	13-1/2"	5-1/2"	2-1/8"	1-7/8"	2-1/2"	13/32"	AS ORDERED	AS ORDERED
R10-4.5SA	10"	11-1/2"	5-1/2"	2"	1-7/8"	2-1/2"	13/32"	AS ORDERED	AS ORDERED
R8-2.5SA	8"	9-1/4"	4-1/2"	1-3/4"	1-3/8"	2"	13/32"	AS ORDERED	AS ORDERED

www.rockettinc.com

Request a quote at:
sales@rockettinc.com
 or call 601-939-2471



Over 100 Years of Manufacturing

In 1965 Rockett Incorporated recognized the need for a strong, economical, and long lasting wheel to replace the cast wheels used in the brick and ceramic industry.

After many months of development the now famous R12 forged steel wheel was introduced with a 10 year guarantee for tread life and flange breakage. The immediate success of the R12 led to the addition of the R8 and R10 for light to medium duty applications and now the R350mm to complement our heavy duty designs.

More than four decades later, ROCKETT has thousands of our forged steel wheels in multiple applications worldwide. Whether your application is in the brick and ceramic industry or heavy material handling, our forged steel wheels have stood the test of time.



ROCKETT, INC.

3640 4th Street | Flowood, Mississippi 39232
Tel (601) 939-2471 | Fax (601) 932-2307

www.rockettinc.com

To request a quote: sales@rockettinc.com